



**Event Planning Guide  
& Rental Catalog  
12th Edition**

**Corporate Office  
812 Madison Industrial Rd.  
Madison, TN 37115  
615-868-3747**

**Satellite Showroom  
1006 Flagpole Ct.  
Brentwood, TN 37027  
615-915-0369**

[www.grandcentralpartyrental.com](http://www.grandcentralpartyrental.com)

## Service:

At Grand Central we are dedicated to providing the best customer service available along with the highest quality rental equipment. We often add to our line. Please ask about any items of interest that might not be listed.

## Rental Terms:

All charges are for time out, whether used or not, so make your selection carefully. We consider our rentals to be 24 hours (48 in the case of Saturday - Monday)

## Reserving Equipment:

Equipment will be reserved upon receipt of a signed rental contract and a non-refundable deposit. The required deposit is 50% of all charges. Equipment availability is on a first come first serve basis. We recommend reserving equipment well in advance.

## Payment Terms:

The full balance for your order is due 14 days prior to your event. We accept Master Card, Visa, American Express, Check or Cash for all payments. Corporate accounts may setup charge accounts subject to credit approval.

## Delivery Service:

Delivery is available for a nominal fee in our regular delivery area between 9:00am-5:00pm. We can only offer delivery for orders with a rental total over \$200. Our delivery personnel are instructed to neatly stack all items in a mutually convenient place on delivery. Rates quoted are for ground floor deliveries to your door. Setup and takedown is available if arranged in advance with our office staff.

## China-Glassware-Utensils-Linens:

Special containers are provided for your china, silver, glassware, etc., to insure that you receive your items sanitized, undamaged, sparkling, and table-ready. All china, utensils, glassware, etc. must be rinsed and free of food, decorations and dry to prevent staining and mildew. Linens should be shaken and free of food. Please do not put linens in a plastic bag in that it could cause mildew. A service charge will incur for items that are not rinsed or free of food.

## Loss or Damage

Count your equipment at time of rental and report any shortages immediately. Our count of items is to be accepted unless we are informed immediately. The customer is responsible for any rental equipment not returned. The customer will be charged for missing items, including linens burned or ruined by stain.

## Additional Services

Setup/Breakdown Chairs .....\$.50 up/\$.50 down  
 Setup/Breakdown Tables .....\$1.00 up/\$1.00 down  
 Exact Time Delivery Additional .....\$25.00/each way  
 Special Labor Needs.....Call For Pricing

Early/Late Service (7pm-8am) . . \$100 Per Man  
 Install Linen/Overlay . . . . . \$1.00/Table  
 Sunday Delivery Pickup . . . . . \$200/Truck  
 (Stairs, Elevators, Etc)

## Table of Contents

<b>About Renting</b> . . . . .	<b>2</b>
<b>Tables &amp; Chairs</b> . . . . .	<b>3</b>
<b>Linens</b> . . . . .	<b>4</b>
<b>China</b> . . . . .	<b>5</b>
<b>Flatware</b> . . . . .	<b>6</b>
<b>Glassware</b> . . . . .	<b>6 &amp; 7</b>
<b>Beverage Service</b> . . . . .	<b>7</b>
<b>Catering Equipment</b> . . . . .	<b>7 &amp; 8</b>
<b>Wedding Equipment</b> . . . . .	<b>8 &amp; 9</b>
<b>Conference Equip</b> . . . . .	<b>9</b>
<b>Selecting The Right Tent</b> . . .	<b>10 &amp; 11</b>
<b>Tents</b> . . . . .	<b>12 &amp; 13</b>
<b>Tent Accessories</b> . . . . .	<b>14 &amp; 15</b>
<b>Dance Floors/Staging</b> . . . . .	<b>15</b>
<b>Tent Packages</b> . . . . .	<b>16</b>
<b>Venues</b> . . . . .	<b>17</b>
<b>Lounge Furniture</b> . . . . .	<b>18</b>
<b>About Us</b> . . . . .	<b>19</b>
<b>Inflatables/Games/Concessions</b> . .	<b>20</b>

**Planning An Event Is A Process . . . . .**

**. . . . .A Successful Event Is Our Product . .**

# Tables & Chairs . . .

**Chairs**

White Folding . . . . .	\$1.25
Black Folding . . . . .	\$1.10
White Poly Wood Garden Chair w/Padded Seat (#1 Seller) . . . . .	\$2.75
Black Poly Wood Garden Chair w/Padded Seat . . . . .	\$2.75
Fruitwood Garden Chair w/Padded Seat . . . . .	\$2.75
Fruitwood Chavari w / Ivory Cushion . . . . .	\$7.95
White Chavari w / White or Black Cushion . . . . .	\$7.95
Children's Chair . . . . .	\$1.00

**Tables**

6ft Banquet Table . . . . .	\$7.50
8ft Banquet Table . . . . .	\$7.50
30" Round Table (30" High) . . . . .	\$7.50
30" Round Cocktail Table (42" High) . . . . .	\$10.00
30" Square Table (30" High) . . . . .	\$8.00
30" Square Cocktail Table (42" High) . . . . .	\$10.00
30" Triangle Table (30" High) . . . . .	\$8.00
30" Triangle Cocktail Table (42" High) . . . . .	\$10.00
36" Round Table . . . . .	\$7.50
48" Round Table . . . . .	\$7.50
60" Round Table . . . . .	\$7.50
72" Round Table . . . . .	\$10.00
Serpentine Table (3' x 5' Per Section) . . . . .	\$11.00
Table Number Stands . . . . .	\$1.50
4ft Children's Table . . . . .	\$9.00

**Bars**

8ft Bar Table w/Skirting (Black or White) . . . . .	\$55.00
8ft White Pixel barr . . . . .	\$95.00
8ft Copper Swirl Serpentine Bar W/Black Spandex Skirt . . . . .	\$95.00
8ft Aluminum Swirl Serpentine Bar W/Black Spandex Skirt . . . . .	\$95.00

**Suggested Seating**

36" Round Comfortably Seats 4  
 48" Round Comfortably Seats 6  
 60" Round Comfortably Seats 8  
 72" Round Comfortably Seats 10  
 6' Banquet Comfortably Seats 6  
 8' Banquet Comfortably Seats 8

**Linen Tip**

For a special touch . . overlays in different colors and sizes give a decorative look. Add a third color with napkins to create a touch of elegance. Remember to order extra napkins for roll & bread baskets.





## Standard Poly Linens

90" round . . . . .	\$10.00
108" Round . . . . .	\$12.00
120" Round . . . . .	\$13.00
132" Round . . . . .	\$18.00
90" x 132" . . . . .	\$13.50
90" x 156" . . . . .	\$14.50
Banquet Cloth (72" x 120") (Limited Colors) . . . . .	\$10.00
90" x 90" Square . . . . .	\$10.00
72" x 72" Square . . . . .	\$9.00
Table Skirting . . . . .	\$1.35 per ft
Napkins 20" x 20" . . . . .	\$.65 ea
Chair Covers w/Tie . . . . . starting at . . . . .	\$5.50
Chair Covers Universal (Satin) . . . . .	\$3.50

**Colors Available: White, Ivory, Beige, Camel, Khaki, Maize, Lemon, Gold, Peach, Coral, Orange, Burnt Orange, Terra Cotta, Olive, Chocolate, Sage, Lime, Kelly Green, Hunter, Turquoise, Teal, Light Blue, Periwinkle, Royal Blue, Navy, Light Pink, Pink, Hot Pink, Burgundy, Red, Lilac, Claret, Purple, Eggplant, Grey and Black**



## Iridescent

90" Round . . . . .	\$18.00
120" Round . . . . .	\$28.00
90" x 156" . . . . .	\$32.00

**Colors Available: White, Ivory, Camel, Chocolate, Sky Blue, Lime, Sage, Moss, Orange, Red, Burgundy, Black, Turquoise, Teal, Royal Blue, Silver**



## Poly Stripe

90" Round . . . . .	\$13.00
120" Round . . . . .	\$19.00
90" x 156" . . . . .	\$24.00
72" x 72" Square . . . . .	\$13.00

**Colors Available: White, Black, Ivory**

## Satin

90" Round . . . . .	\$15.00
120" Round . . . . .	\$25.00
90" x 156" . . . . .	\$34.00
72" x 72" Square . . . . .	\$12.00

**Colors Available: White, Ivory, Chocolate, Red, Light Pink, Black**

**Also Available: Bengaline Morie, Chenille Taffita, Pintuck and a Large Inventory of One Of A Kind Overlays.**

**Our inventory changes weekly, if you don't see what you want call we may have already added it. If not we can always get what you want (additional charges may apply).**

**WE LAUNDRER ALL OUR LINENS IN HOUSE TO ASSURE YOU THE BEST QUALITY.**

## Linen Sizes

- 90" Round fits 30" Table to the Floor
- 108" Round fits a 48" Table to the Floor
- 120" Round fits a 60" Table to the Floor
- 132" Round fits a 72" Table to the Floor
- 90" x 132" fits an 6' Table to the Floor
- 90" x 156" fits an 8' Table to the Floor
- 90" Square . .Decorative Overlay
- 72" Square . .Decorative Overlay



### Contemporary White or Ivory

Dinner Plate 10.5"	\$0.45
Luncheon Plate 9.75" (White Only)	\$0.45
Salad Plate 7.75"	\$0.45
Dessert Plate 7.75"	\$0.45
Bread & Butter Plate 6.5"	\$0.45
Coffee Cup & Saucer	\$0.90



### Traditional White Gold Rim

Dinner Plate 10.5"	\$0.50
Salad Plate 7.5"	\$0.50
Dessert Plate 7.5"	\$0.50
Bread & Butter Plate 6.5"	\$0.50
Coffee Cup & saucer	\$1.00



### Specialty White Square

Dinner Plate 10.25"	\$0.55
Salad Plate 7.25"	\$0.55
Dessert Plate 7.25"	\$0.55
Bread & Butter Plate 6.5"	\$0.55
Bowl 7"	\$0.75
Coffee Cup & Saucer	\$1.00



### Lotus Silver

Dinner Plate 10.5"	\$0.60
Salad Plate 7.75"	\$0.60
Dessert Plate 7.75"	\$0.60
Bread & Butter Plate 6.75"	\$0.60
Coffee Cup & Saucer	\$1.00



### Vanessa Silver

Dinner Plate 10.5"	\$0.70
Salad Plate 7.75"	\$0.70
Dessert Plate 7.75"	\$0.70
Bread & Butter Plate 6.75"	\$0.70
Coffee Cup & Saucer	\$1.25



### Vanessa Gold

Dinner Plate 10.5"	\$0.70
Salad Plate 7.75"	\$0.70
Dessert Plate 7.75"	\$0.70
Bread & Butter Plate 6.75"	\$0.70
Coffee Cup & Saucer	\$1.25

### Classic Clear China

9" Plate	\$0.30
8", 7", 6.25"	\$0.30
Bowl 8oz.	\$0.35
Sugar Caddy	\$0.35
Eiffel Tower Salt & Pepper	\$0.75

## Grand Central Party Rental, Inc.

**Corporate:** 812 Madison Industrial Rd.  
Madison, TN 37115 (615-868-3747)

**Satellite Showroom:** 1006 Flagpole Ct.  
Brentwood, TN 37027 (615-915-0369)

email: [info@grandcentralparty.com](mailto:info@grandcentralparty.com)

# Chargers, Flatware, Glassware . . .

## Charger

13" Acrylic Gold Charger . . . . .	\$1.50
13" Acrylic Silver Charger . . . . .	\$1.50
13" Amber Leaf Charger . . . . .	\$1.95
Amber Leaf Salad Plate 8.5" . . . . .	\$.55



## Flatware:

### Windsor

Dinner Fork . . . . .	\$.20
Salad Fork . . . . .	\$.20
Dessert Fork . . . . .	\$.20
Dinner Knife . . . . .	\$.20
Tea/Dessert Spoon . . . . .	\$.20

### Oneida Chateau

Dinner Fork . . . . .	\$.30
Salad Fork . . . . .	\$.30
Dessert Fork . . . . .	\$.30
Dinner Knife . . . . .	\$.30
Dessert Spoon . . . . .	\$.30
Coffee Spoon . . . . .	\$.30
Butter Knife . . . . .	\$.30



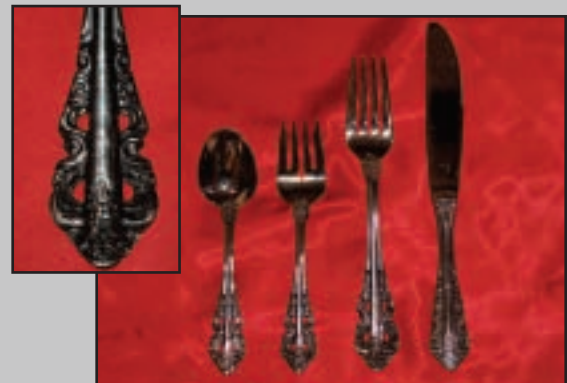
### Parisian (Gold Trim)

Dinner Fork . . . . .	\$.35
Salad Fork . . . . .	\$.35
Dessert Fork . . . . .	\$.35
Dinner Knife . . . . .	\$.35
Dessert Spoon . . . . .	\$.35
Coffee Spoon . . . . .	\$.35



### Baroque

Dinner Fork . . . . .	\$.38
Salad Fork . . . . .	\$.38
Dessert Fork . . . . .	\$.38
Dinner Knife . . . . .	\$.38
Dessert Spoon . . . . .	\$.38
Coffee Spoon . . . . .	\$.38



## Glassware

Glass Punch Cup . . . . .	\$0.35
Traditional Champagne 4.5oz. . . . .	\$0.35
Flute Champagne 6oz . . . . .	\$0.35
Water/Iced Tea Goblet 8.5oz (Stemmed) . . . . .	\$0.50
Wine Glass 8.5oz (Stemmed). . . . .	\$0.50
High Ball 9oz . . . . .	\$0.50
Rocks 10 3/4oz . . . . .	\$0.50
Irish Coffee Mug . . . . .	\$0.50
Grand Balloon 18oz . . . . .	\$0.55
Balloon Wine 13oz. . . . .	\$0.55



**Corporate (Madison) 615-868-3747**  
**Satellite Showroom (Brentwood) 615-915-0369**

**email: [info@grandcentralparty.com](mailto:info@grandcentralparty.com)**

# Glassware & Beverage Service . . .

## Glassware

Balloon Wine 8.5oz . . . . .	\$0.55
Martini Glass . . . . .	\$0.55
Pilsner 12oz . . . . .	\$0.55
Bar Glass 16oz . . . . .	\$0.55
Margarita Glass . . . . .	\$0.55
Shot Glass 2oz . . . . .	\$0.55

## Beverage Service

7 Gallon Champagne Fountain . . . . .	\$60.00
5 Gallon Champagne Fountain . . . . .	\$50.00
3 Gallon Champagne Fountain . . . . .	\$40.00
Silver Punch Bowl W/Ladle . . . . .	\$18.00
Glass Punch Bowl W/Ladle . . . . .	\$7.00
Water Pitcher 60oz (Clear Plastic) . . . . .	\$1.50
Silver Coffee Urn (55 Cup) . . . . .	\$45.00
Silver Coffee Urn (25 Cup) . . . . .	\$35.00
Coffee Maker (100 Cup) . . . . .	\$20.00
Coffee Maker (55 Cup) . . . . .	\$17.00
White Insulated Coffee Server . . . . .	\$5.00
Silver Tea or Coffee Server . . . . .	\$15.00
5 Gallon Cambro Insulated Beverage Server . . . . .	\$12.00
Wine Bucket Table Top . . . . .	\$5.00
Wine Bucket W/Floor Stand . . . . .	\$9.00
1 Liter Carafe . . . . .	\$1.00
Frozen Drink Machine . . . . .	\$150.00

## Catering Equipment

Chocolate Fountain (with 16lb's Premium Chocolate) . . .	\$300.00
4 Quart St. St. Square Presentation Chafer . . . . .	\$18.00
5 Quart St. St. Round Presentation Chafer . . . . .	\$18.00
8 Quart St. St. Dish w/Full Pan Chafer . . . . .	\$18.00
8 Quart St. St. Dish W/Split Pan Chafer . . . . .	\$18.00
8 Quart St. St. Presentation Chafer . . . . .	\$22.00
8 Quart St. St. Roll Top Chafer . . . . .	\$40.00
8 Quart Hammered Copper Round Chafer . . . . .	\$40.00
Chafing Fork, Slotted or Solid Spoon . . . . .	\$1.50
2' x 5' Charcoal Grill (Cleaning Fee \$20.00) . . . . .	\$49.00
Carving Station (1 Heat Lamp) . . . . .	\$38.00
Carving Station (2 Heat Lamp) . . . . .	\$40.00
Oval Waiters Tray . . . . .	\$6.00
Waiters Tray Stand . . . . .	\$5.00
Hot Box (Food Warmer) Sterno . . . . .	\$55.00
Food Warmer Electric . . . . .	\$125.00
14" Silver Cake Stand (Round) . . . . .	\$18.00
16" Silver Cake Stand (Round) . . . . .	\$25.00
17" Silver Cake Stand (Square) . . . . .	\$29.00
18" Silver Cake Stand (Round) . . . . .	\$29.00
19" Silver Cake Stand (Round) . . . . .	\$35.00

## Glassware Tip Beverage Guidelines

- 2 cups of punch per person
- 1 keg beer = 160 8oz glasses
- 1 gallon wine = 21 6oz glasses
- 1 bottle wine = 6 - 4oz glasses
- 15 ice cubes per person  
(2-3 hour cocktail party)



## Helpful Tips

Place one inch of hot water in water pan of chafer before serving.

Allow one buffet line per 50 guest.

(615) 868-3747

[www.grandcentralpartyrental.com](http://www.grandcentralpartyrental.com)

# Catering Equipment & Wedding Equipment . . .



## Presentation/Serving Equipment

Banana Leaf .38" x 17" x 2" . . . . .	\$30.00
Two Tier Wrought Iron Banana Leaf Stand . . . . .	\$8.00
Hammered Square Tray .17" x 17" x 4" . . . . .	\$24.00
Hammered Square Tray .13" x 13" x 4" . . . . .	\$13.00
Wrought Iron Stand (Holds 3 Trays) (Picture to Right) .	\$25.00
Single Wrought Iron Stand for Square Tray . . . . .	\$8.00
Vine Tier Server (15.5" x 15.5" x 21", see page 8) . . . . .	\$39.00
Rotating Glass Bowl Server (16.5" x 26" x 20.5", pg 8)	\$35.00
Revere Bowl 4" . . . . .	\$3.00
Revere Bowl 6" . . . . .	\$4.00
Revere Bowl 8" . . . . .	\$5.00
Revere Bowl 10" . . . . .	\$6.00
Revere Bowl 12" . . . . .	\$7.00
Stainless 10.5" Round Plate Cover . . . . .	\$0.65
Stainless 11" Square Plate Cover . . . . .	\$0.75
Table Number w/Stands . . . . .	\$1.50



## Wedding Equipment

### *Nickel Candelabras*

#### Angel Wings w/Votives

Angel Wing 10 Lite Arch . . . . .	\$35.00
Angel 10 Lite Spiral . . . . .	\$28.00
Angel 9 Lite Tree . . . . .	\$25.00
Angel Single Lite Tree . . . . .	\$10.00
3 Lite Unity Candelabra . . . . .	\$10.00
Aisle Marker Pew Attachment . . . . .	\$9.00



### *Wrought Iron*

Wrought Iron Scroll . . . . .	\$45.00
Wrought Iron 9 Lite Tree . . . . .	\$45.00
2ft Single Lite Candelabra . . . . .	\$10.00
3ft Single Lite Candelabra . . . . .	\$15.00
4ft Single Lite Candelabra . . . . .	\$22.00
5ft Three Lite Candelabra . . . . .	\$28.00
5ft Three Lite Antique Gold Candelabra . . . . .	\$25.00
6ft Three Lite Antique Gold Candelabra . . . . .	\$28.00
Antique Gold Harp (Floral or Candle Stand) . . . . .	\$35.00

**Scarritt Bennett**



Filled with creative ideas, products and professionals ready to assist you, we have two showrooms to better serve our customers. Visit our main corporate office at 812 Madison Industrial Rd, Madison near Rivergate Mall or our Satellite Showroom at 1006 Flagpole Ct, Bentwood near Cool Springs Mall.

### **Standard Business Hours:**

**Monday thru Friday 9:00am - 5:00pm**

**Saturday 9:00am - 3:00pm (Bentwood by appt. only)**

Note: Hours are subject to change during winter months, January - February.

# Columns, Conference Equipment & Decor . . .

## Columns & Colonnades

Complete Greek Backdrop . . . . .	\$175.00
Greek Backdrop 1/4 Circle (No Arch) . . . . .	\$75.00
Greek Backdrop 1/2 Circle (No Arch) . . . . .	\$125.00
Colonnade Arch . . . . .	\$50.00
40" White Greek Columns . . . . .	\$20.00
32" White Greek Columns . . . . .	\$16.00
22" White Greek Columns . . . . .	\$10.00
White Grecian Urns . . . . .	\$7.00



## Conference Equipment

Pipe & Drape . . . . .	Call for Pricing
Coat Rack . . . . .	\$15.00
Waste Basket . . . . .	\$4.00
8' Table . . . . .	\$7.50
6' Table . . . . .	\$7.50
Table Skirting . . . . .	\$1.35 per ft.
30 Gallon Trash Can . . . . .	\$5.00
Black Folding Chair . . . . .	\$1.10
White Folding Chair . . . . .	\$1.25
Banquet Cloth starting at (Limited Colors) . . . . .	\$8.00
Stanchions . . . . .	\$10.00
8' Red Rope . . . . .	\$5.00



## Decor

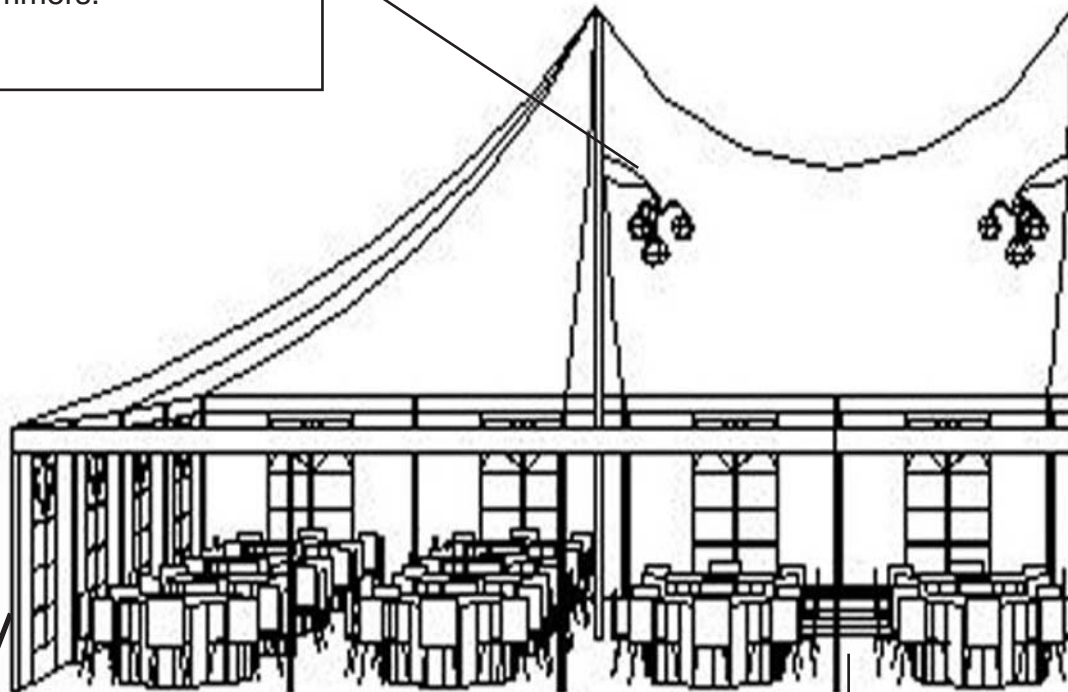
*Transform your venue from ordinary to stunning with a ceiling drape and lighting environment designed to complement your decor. Ceiling draping and lighting is wise use of your event decorating budget, as no other decorative element has as much impact for the amount of money spent. Ceiling drape also helps reduce echo and acoustic noise in spaces with a lot of hard surfaces like glass and marble. Let us enhance the mood and atmosphere of your event with beautifully designed draping and lighting.*

*We only use fine, high quality fabrics such as voile, and satin. We carry black, white and off white colors that can perfectly go in accordance to your theme and/or event vision. Our voile ceiling drapings have been part of.. Weddings, Corporate Events, Graduations and More!*



## Lighting

- ▶ Grand Central Party can provide a whole range of options for illuminating the whole space and for highlighting the dance floor or wedding cake.
- ▶ Your customer service representative can add any other decorative elements you'd like, including projection lighting (for patterns or motifs) or fixtures such as chandeliers with dimmers.



## Sidewalls

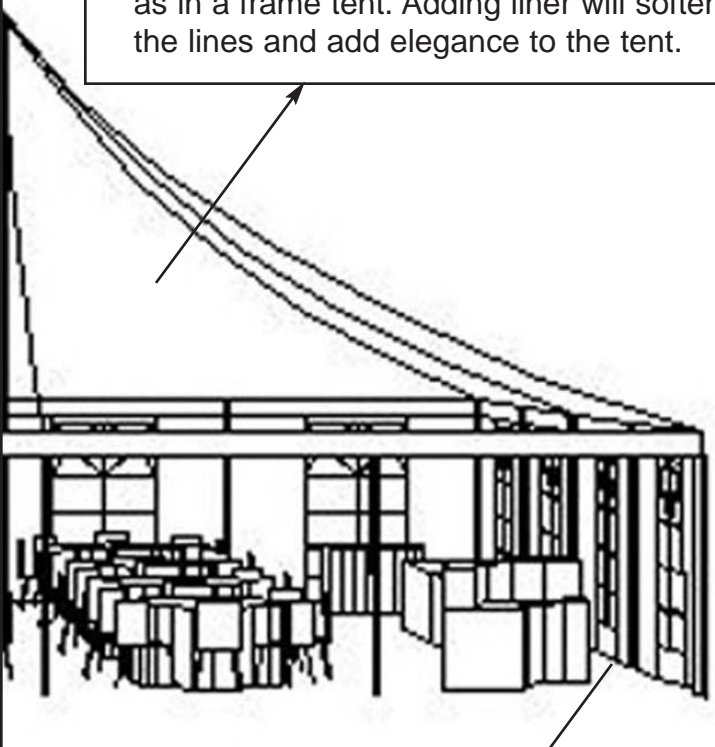
- ▶ Grand Central Party offers detachable vinyl walls that may be solid white, clear or windowed (Cathedral).
- ▶ Walls are often installed when the tent goes up usually 1-2 days before your event. Sidewalls are easy to remove if the weather changes for the better.
- ▶ Windowed walls (Cathedral) let in light and allow for a view of surrounding property, though a solid wall is often used along a side facing something you'd rather obstruct, such as catering tent, restrooms or a busy street.

## Flooring

- ▶ For the dance floor Grand Central Party offers two selections Black and White checkerboard or Parquet Wood (Our Most Popular).
- ▶ Flooring the rest of the tent will depend on the ground underneath it. Fairly even surfaces may be covered without building a sub-floor. To level uneven ground a sub-floor will be required which is more involved and costly.
- ▶ Any floor can be covered with Astro Turf or Carpet.

## Ceiling

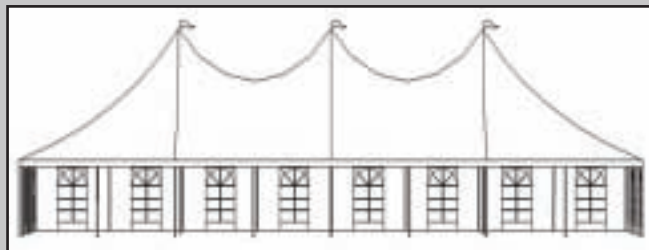
- ▶ The top of the tent is typically solid white vinyl. Grand Central Party tents have blackout for their tops, which protects against the sun and heat.
- ▶ Inside the tent the ceiling may be draped with fabric to disguise structural supports as in a frame tent. Adding liner will soften the lines and add elegance to the tent.



## Climate Control

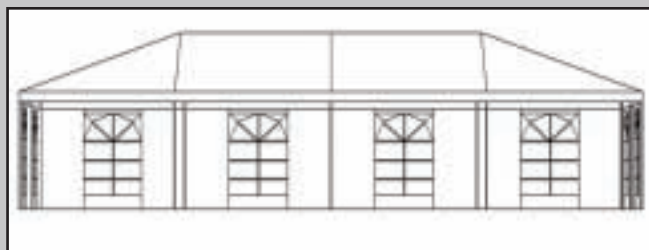
- ▶ Cooling a tent may be as simple as adding fans attached to sidepoles.
- ▶ Heating or Air Conditioning can be vented in from units just outside the walls of the tent. In this case the tent would need to have sidewalls.
- ▶ You should ask for pricing for heating or air to be included on your first proposal so you will be aware of the cost. Air conditioning will need to be arranged weeks in advance of your event.

## Tent Types



### Pole Tent

Our most popular for weddings. With a dramatic, swooping look it creates a festive look. A pole tent is a tension tent with center poles inside the tent. This style tent requires an earthen or soft surface.



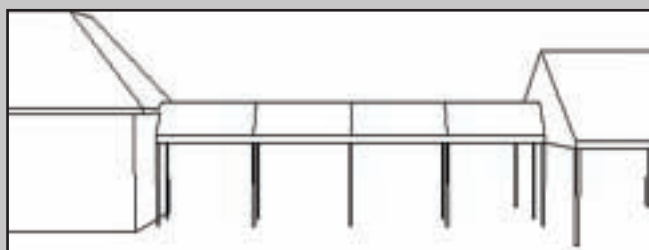
### Frame Tent / Hip End

A frame style tent is a versatile, free standing structure which can be installed on just about any surface.. With no center poles, you get an unobstructed interior. With a Hip End the roof slants down on all four sides.



### Frame Tent / Gable End

A frame style tent is a versatile, free standing structure which can be installed on just about any surface.. With no center poles, you get an unobstructed interior. With a Gable End the roof slants down on only two sides.



### Marquee

Used as a connector between tents or buildings to cover walkways to keep guest dry in inclement weather

## Tent Checklist

- |                  |                          |                 |
|------------------|--------------------------|-----------------|
| ◆Walkway         | ◆Electrical Requirements | ◆Chairs         |
| ◆Tents           | ◆Comfort Stations        | ◆Linens         |
| ◆Sidewalls       | ◆Decor                   | ◆Glassware      |
| ◆Liner/Draping   | ◆Staging                 | ◆Bars           |
| ◆Lighting        | ◆Dance Floor             | ◆Flatware       |
| ◆Heating/Cooling | ◆Tables                  | ◆Serving Equip. |

### Frame Tents

A frame style tent is a versatile, free standing structure which can be installed on just about any surface. A rigid framework of heavy duty aluminum pipe is constructed and the vinyl canopy is fitted on the frame before erecting. With no center poles in a frame tent, you get an unobstructed interior.

(All Tents White Blackout)

10' x 10'	\$150.00
15' x 15'	\$200.00
20' x 20' (Sierra High Peak)	\$300.00
20' x 20'	\$300.00
20' x 30'	\$Call
20' x 40'	\$Call
20' x 50'	\$Call
20' x 60'	\$Call
20' x 80'	\$Call
30' x 30'	\$595.00
30' x 45'	\$Call
30' x 60'	\$Call
30' x 75'	\$Call
50' x 30'	\$1,050.00
50' x 45'	\$Call
50' x 60'	\$Call
50' x 75' )	\$Call
50' x 90'	\$Call
50' x 105'	\$Call
50' x 120'	\$Call

### Expandable Marquee

Walkways are available at \$125 per 10 ft. section (10' wide, up to 100' long). They may connect two or more tents or be installed to lead to an existing structure. In addition to adding weather protection for guest, walkways also add a special flair to the overall layout and presentation.





**Pole Tents**

A traditional pole tent is erected using center poles to push up the canopy. The tent is then stabilized with guylines at each of the side poles. Because the guylines must be staked into the ground, this style tent requires an earthen or soft surface. We can install a pole tent on an asphalt surface and patch the stake holes upon removal of the tent. For a festival party atmosphere, a pole tent is the way to go.

(All Tents White Blackout)

40' x 40'	.....	\$800.00
40' x 60'	.....	\$Call
40' x 80'	.....	\$Call
40' x 100'	.....	\$Call
40' x 120'	.....	\$Call
60' x 60'	.....	\$2,160.00
60' x 90'	.....	\$Call
60' x 120'	.....	\$Call
60' x 150'	.....	\$Call

**Inflatable 30' Wide Tent**

Perfect for those hot summer days. Our inflatable 30' wide tent can sit up to 50 people with buffet lines and a drink station. It goes up fast to provide shade and cooler temperatures. Add a Way Cool for a very comfortable party when those temperatures reach 90 degrees. . . \$400.00



# Tents & Accessories . . .



**Without Liner**



**With Liner**



**With Liner**

## Liners

To create a look of elegance liners and pole draping add softness and contours to the tent. (Liners include a valance around the tent and pole draping.)

30' x 30' .....	\$450
30' x 45' .....	\$675
30' x 60' .....	\$900
40' x 40' .....	\$592
40' x 60' .....	\$888
40' x 80' .....	\$1184
40' x 100' .....	\$1480
Center Pole Draping .....	\$50.00/ea.
Perimeter Pole Draping .....	\$20.00/ea.
Poly Tubing Center Pole Cover .....	\$15.00/ea.
Poly Tubing Perimeter Pole Cover .....	\$4.00/ea.

**\*Liners include Pole Draping & Valance**



## Lighting & More

Outline and decorate your tent with dramatic, romantic lights. Small lights make an excellent accent around the perimeter of a tent.

**(Lighting Packages Include Extension Cords and Dimmers)**

### Large Chandeliers (Wrought Iron, Approximately 36")

1-Chandelier .....	\$150.00
2-Chandeliers .....	\$270.00
3-Chandeliers .....	\$395.00

### Small Crystal Chandeliers (Approximately 18")

1-Chandelier .....	\$95.00
2-Chandeliers .....	\$175.00
3-Chandeliers .....	\$265.00

### Japanese Lanterns

Different Sizes and Colors Available ..... **Call For Pricing**

**Gobo's** ..... **Call For Pricing**

# Tents & Accessories . . .

(8) 6" White Globes On 30' Cord . . . . .	\$25.00
Ellipsoidal Projector (images of logos, etc.) . . . . .	\$75.00
Exit Sign . . . . .	\$25.00
Fire Extinguisher . . . . .	\$15.00
Generator . . . . .	Call for Price
Tent Fans . . . . .	\$Call
Way Cool . . . . .	\$Call
Air Conditioning . . . . .	\$Call
Heating . . . . .	\$Call
Water Barrels . . . . .	\$Call
Concrete Weights . . . . .	\$Call



**Dance Floor**  
Call For Pricing



**Tent Fans**  
Call For Pricing



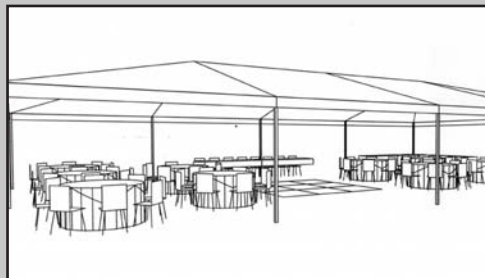
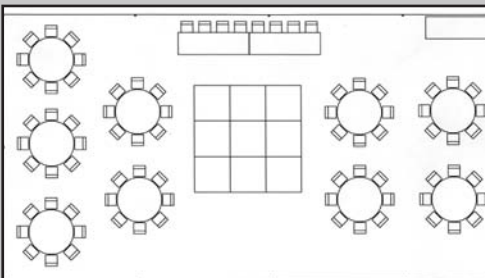
**Way Cool**  
Call For Pricing



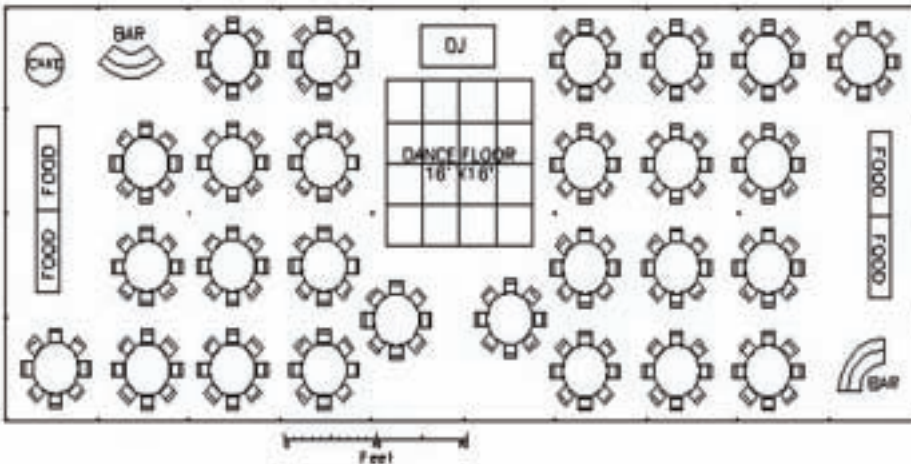
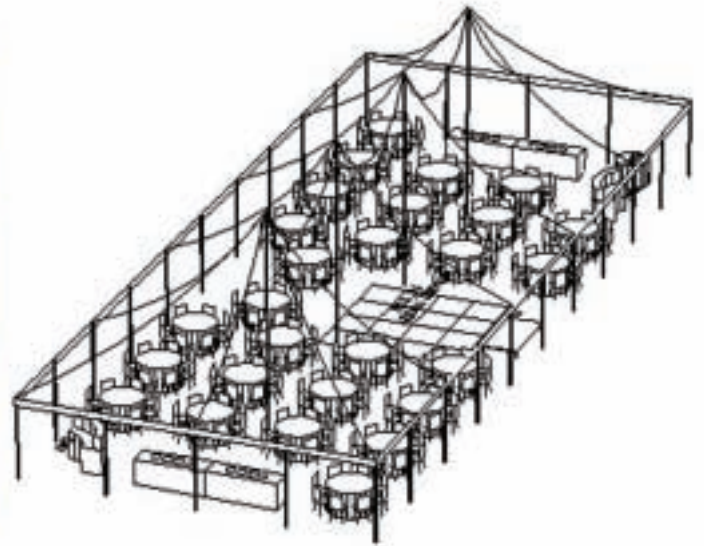
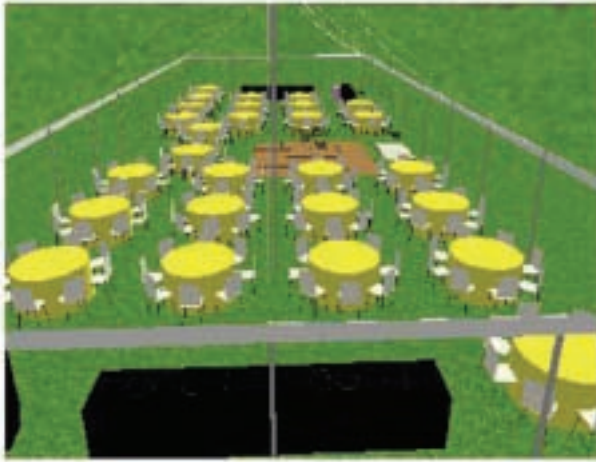
## Sidewalls

Tent sides provide weather protection and security. Unique Cathedral windows are framed in white.

White 8'H x 30'L . . . . .	\$Call	White 9'H x 30'L . . . . .	\$Call
Cathedral 8'H x 30'L . . . . .	\$Call	Cathedral 9'H x 30'L . . . . .	\$Call
Clear 8'H x 30"L . . . . .	\$Call		



At Grand Central Party we have the most up to date programs and systems to help you plan your special event. Recognized as one of the leaders in offering computer aided design (**CAD**), we can help you see what your event layout will look like before it happens. Our professional staff can take you through the design process on paper prior to your event. By visualizing your event before setup time, you can make necessary changes and additions before the work begins. You can relax and be free of those last minute surprises.



**40' X 100'**  
SEATING 216  
8 PER TABLE



**GRAND CENTRAL  
PARTY RENTAL, INC.**

Date: 06/20/09  
Project: 40 x 100  
Owner: Grand Central  
Designer: Kim McLean

## *Tent Packages*

Tent Packages available at discounted prices. Packages include tent, tables, chairs, linens, bars, buffet tables, cake table and dance floor.

Everything you need for seating from 80 to 350.

Call For Pricing

Corporate Office (Madison) 615-868-3747

Satellite Office (Bentwood) 615-915-0369

## Historic Rock Castle



Planning a special event for your family, friends or employees? Maybe you're looking for that perfect place to have your wedding. Historic Rock Castle has so much to offer! From the beautiful Castle sitting on the banks of Old Hickory Lake to 18 acres with a covered Pavilion. Everything you need for events from 50 to 500. Wedding Packages are available. Call Grand Central Party Rental for availability and pricing. 615-868-3747  
[info@grandcentralparty.com](mailto:info@grandcentralparty.com)

## Sound Kitchen

Welcome to the Platinum Award-winning Sound Kitchen Studios, located in Franklin, TN. Named Nashville's Best Recording Studio by Music Row Magazine, we offer competitive rates for all private, corporate events and weddings. For booking information and available dates contact Grand Central Party Rental, Bentwood Office 615-915-0369

[info@grandcentralparty.com](mailto:info@grandcentralparty.com)



## Hazel Path Mansion

Southern Splendor at its finest, charming and elegant describes Hazelpath Mansion situated in the heart of Hendersonville, TN, just 30 minutes from downtown Nashville.

For booking information and available dates contact Grand Central Party Rental, Corporate Office (Madison) 615-868-3747  
[info@grandcentralparty.com](mailto:info@grandcentralparty.com)



## Additional Venues

**Springhaven Mansion (Hendersonville, TN) 615-826-9702 [www.springhavenmansion.com](http://www.springhavenmansion.com)**

**Brentwood Country Club (Bentwood, TN) 615-373-2552 [www.bcctn.org](http://www.bcctn.org)**

**Frontier Room (Downtown Nashville) Contact Tammy at 615-300-5672**

# Modular Seating (Lounge Furniture) . . .



**Axis II Corner 31.5" w x 31.5" d x 28.5" h**  
**Available Colors: White, Black, Pewter**  
**Price . . . . . \$65 each**



**Axis II Chair 30" w x 31.5" d x 28.5" h**  
**Available Colors: White, Black, Pewter**  
**Price . . . . . \$55 each**



**Axis II Ottoman 30" w x 30" d x 19.5" h**  
**Available Colors: White, Black, Pewter**  
**Price . . . . . \$50 each**



**Axis II Cylinder 18" dia x 17" h**  
**Available Colors: White, Black, Pewter**  
**Price . . . . . \$20 each**



**Pixel Bar 80" w x 24" d x 40" h**  
**Price . . . . . \$95**

<b>Accessories</b>	
Cylinder Tray . . . . .	\$15
Opus table . . . . .	\$20

**615-868-3747**

**email: [info@grandcentralparty.com](mailto:info@grandcentralparty.com)**